

WAVE 1T

TIMER MODULE

INSTRUCTION MANUAL



WAVE 1T is a microprocessor-controlled timer module for the sauna control unit WAVE 1.

INSTRUCTION MANUAL

1.0.0	UNIT DESCRIPTION	2	7.0.0	MANUFACTURER'S DECLARATION	6
1.1.0	GENERAL	2			
1.2.0	OPERATIONAL MODE	2	8.0.0	GUARANTEE	7
1.3.0	SCOPE OF APPLICATION	2			
1.4.0	OVERVIEW/CLEANING	2			
1.5.0	STANDARD ACCESSORIES	2			
2.0.0	SAUNA OPERATION	3			
2.1.0	OPERATING AND DISPLAY ELEMENTS	3			
2.2.0	SETTING OF THE DESIRED TEMPERATURE	3			
3.0.0	IMPORTANT INSTALLATION INFORMATION	3			
4.0.0	COMPONENTS INSTALLATION	3			
4.1.0	INSTALLATION OF THE TIMER MODULE	3			
4.2.0	FINAL INSTALLATION OF ALL MODULES AND CABLES	4			
5.0.0	ELECTRICAL CONNECTION	5			
6.0.0	TECHNICAL DATA	5			
6.1.0	TIMER MODULE	5			

WE DO IT FIRST.

1.0.0 UNIT DESCRIPTION

1.1.0 GENERAL

The timer module is used only as a connection device for the “WAVE 1” sauna control unit. For normal operation, the base unit is required.



It is essential to follow the installation instructions when wiring the components!

1.2.0 OPERATIONAL MODE

The control unit is ready for operation when all installations have been completed.

By turning the thumbwheel, the timer module is activated and the operational mode can be selected.

1.3.0 SCOPE OF APPLICATION

WAVE 1T is only ready for use with the supplied original accessories.

1.4.0 OVERVIEW/CLEANING

Electronic timer module for the sauna control unit WAVE 1. The microprocessor-controlled control unit covers a time presetting of 15 min – 12 hours (in steps of 15 min).

Cleaning of the housing

The cleaning intervals depend on the degree of dirt collection. First disconnect all poles of the sauna control unit. Do not disassemble!

Carefully wipe the front of the housing with a soft cloth slightly moistened with soapy water. Do not clean the back of the housing and the printed circuit board behind it. If required, call service personnel.

1.5.0 STANDARD ACCESSORIES

The scope of supply includes:

1. Timer module with housing
2. Data connection cable

WE DO IT FIRST.

2.0.0 SAUNA OPERATION

2.1.0 OPERATING AND DISPLAY ELEMENTS

The control unit is operated by means of one thumbwheel, which protrudes from the unit laterally and, after starting, is illuminated with a red light.

2.2.0 SETTING OF THE DESIRED TEMPERATURE

Set the desired temperature by turning the thumbwheel.



3.0.0 IMPORTANT INSTALLATION INFORMATION

WARNING!

This instruction manual is supplied together with the installation manual of the sauna cabin! Follow all instructions concerning the cabin construction.

The control unit must be connected in strict compliance with these instructions!

Only use the supplied original cables and original parts!

We refuse to accept any responsibility for damage or consequential damage caused by any parts supplied by other manufacturers or parts that have been incorrectly connected. Check all cables for damage. Even cables with minor damage (e.g. squashing, etc.) are dangerous! Have such cables exchanged by service personnel immediately!

We refuse to accept any responsibility for damage or consequential damage caused by any damaged parts.

WARNING!

The timer module is ready for use only after all electronic & mechanical installations for normal operation have been completed.

4.0.0 COMPONENT INSTALLATION

4.1.0 INSTALLATION OF THE TIMER MODULE

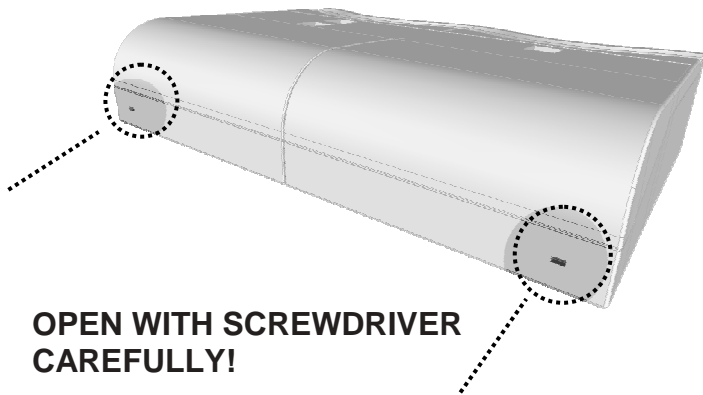
The timer module is connected at the bottom of the base unit or at the humidity module. Open the housing of the base unit and of the timer module. The covers are removable (sample illustration 1, page 4).

Break out the pre-cut area at the bottom end of the housing and hook in the timer module. At the corners are holes which are designated to screw in the housing (sample illustration 2, page 4).

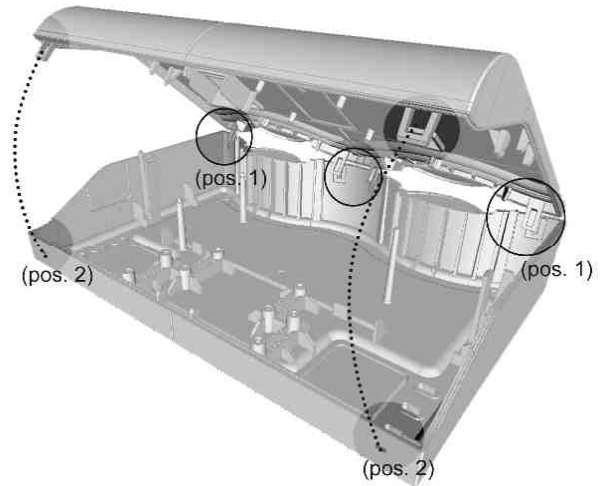
The electrical connection must be completed in accordance with the relevant standards!

WE DO IT FIRST.

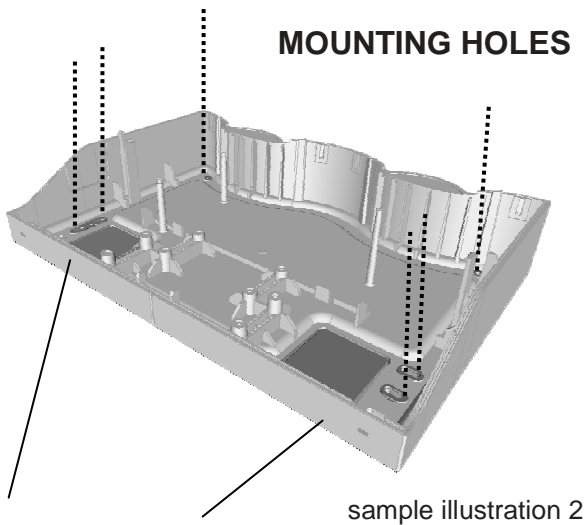
sample illustration 1



sample illustration 3



MOUNTING HOLES



4.2.0 FINAL INSTALLATION OF ALL MODULES AND CABLES

Upon installation, all lines are fed into the power unit through the respective holes.

Subsequently, all lines are connected in accordance with the terminal diagram.

CABLE OUTLETS

For cable feed-in, use a knife to cut respective pieces along the depressions and then break out the pieces.

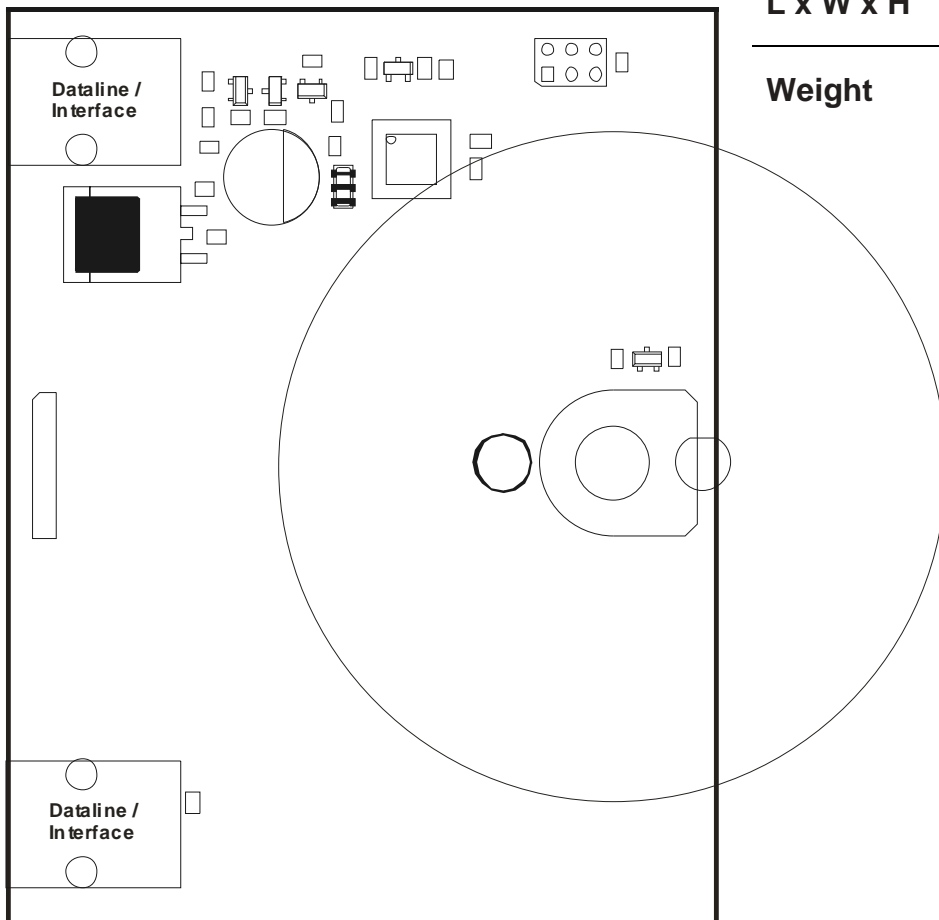
When closing the housing, make sure that the fixtures in the wave section (pos.1) are in place. The housing can then be closed by locking the fasteners at the back (pos.2) (sample illustration 3).

WE DO IT FIRST.

5.0.0 ELECTRICAL CONNECTIONS

Connect the basic module with the timer module at one of the data links.

If you should also use a humidity module, connect it to the other data link.



6.0.0 TECHNICAL DATA

6.1.0 TIMER MODULE

Control voltage	Extra-low voltage 5 V= and 1 2V=
Power input	300 mA max.
Ambient conditions	0 °C to max. 50 °C, max. 95 % rel. humidity, not condensating!
Housing	IP54, CAT2
Fixing	Screwing-on by means of 4 M3 fixing holes
Dimensions: L x W x H	130 x 165 x 55 mm
Weight	300 g

WE DO IT FIRST.

7.0.0 MANUFACTURER'S DECLARATION

**ABATEC Electronic AG
Oberregauer Straße 48
A-4844 Regau**

declares for the following product:

TIMER MODULE "WAVE 1T"

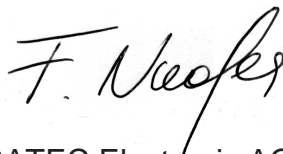
to be in accordance with the following terms:

**Low Voltage Directive 73/23
As amended by Council Directive 93/68/EEG new: 2006/95/EG
EMV Directive 89/336/EEG
new: 2004/108/EG**

Applied harmonised standards:

Standard description:

- 1 EN 61000-6-3:2007
- 2 EN 61000-6-1:2007
- 3 EN 61000-3-2:2006
- 4 EN 61000-3-3 A2 2005
- 5 EN 60335-1:2006
- 6 EN 60335-2-53:2003



ABATEC Electronic AG
Friedrich Niederndorfer, CEO

Technical modifications, which are made for improvement, are subject to change. This instruction manual was written to the best of our knowledge. Please inform your distributor, or us, if you still detect errors.

Thank you!

ABATEC Electronic AG for:

WE DO IT FIRST.

8.0.0 GUARANTEE

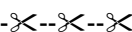
Congratulations on having purchased an innovative "WAVE 1T" sauna control unit from ABATEC.

Should your unit show any defect (Exceptions: lamps, oven, house connection), please return it to your distributor. The control unit will be sent to us directly from the distributor.

The guarantee period for the control unit is 12 months from the date of invoice. In the case of any complaints within such guarantee period, please return the control

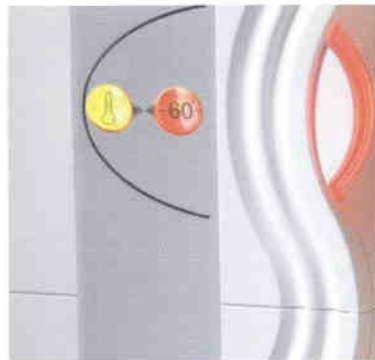
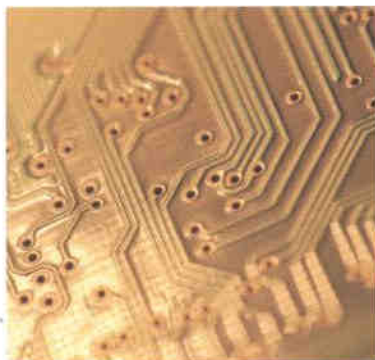
unit and enclose the guarantee form below, completed with your data and your distributor's confirmation, as well as the invoice. Failing this, we must assume that the guarantee period has expired.

In cases where the damage has been caused by non-compliance with the instructions or improper start-up, no guarantee can be granted. Thank you for your trust in ABATEC. We wish you relaxing hours with your "WAVE 1T control unit.



GUARANTEE FORM	
Purchaser:	
Address:	
Postal code:	
Telephone no.:	
(*) Purchase date:	
(*) Distributor's stamp and (*) signature:	
<small>(*) obligatory information</small>	

WE DO IT FIRST.



**WE DO IT
FIRST.**